



Innovation · Quality · Services



Current Transformer Catalog

Split Core · Solid Core · 3 in 1 · Rogowski Coil · RJ Connection · Puncture Type



Web: www.eastrongroup.com
E-mail: sales@eastrongroup.com
Tel: +86-573-8369881 Fax: +86-573-83698883
Add: No.1369, Chengnan Rd. Jiangxing. Zhejiang, 314001, China

Zhejiang Eastron Electronic Co., Ltd.

www.eastrongroup.com



ESCT-T Series
SPLIT CORE CURRENT TRANSFORMER

- Split Core, easy installation
- Primary input 100A~600A
- Secondary output 5A / 1A
- Safe operation
- Standard: IEC60044-1, EN60044-1, VDE0414-44-1, GB1208-2006



ESCT-TU Series
MINI SPLIT CORE CURRENT TRANSFORMER

- Split Core, easy installation
- Primary input 5A~600A
- Secondary output 333mV / 100mV / 100mA
- Safe operation
- Standard: IEC60044-1, EN60044-1, VDE0414-44-1, GB1208-2006

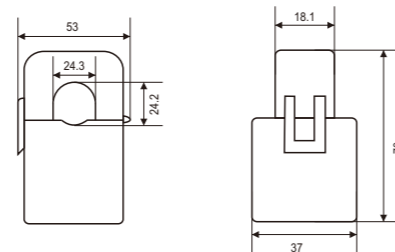
Specification

Frequency	50-60Hz
Rated current	100A to 600A loads
Rated output	1A / 5A (AC)
Accuracy	Class 0.5 or 1 from 20% to 120% of rated current
Phase angle	Less than 2 degrees at 50% of rated current
Insulation voltage	600Vac
Maximum primary voltage	5000Vac (Insulated Conductor)
Dielectric strength	2.5KV/1mA/1min
Operating temperature	-12°C to +75°C.
Operating humidity	<85%
Case material	PC / UL94-V0
Bobbin	PBT
Core	Permalloy
Internal structure	Epoxy

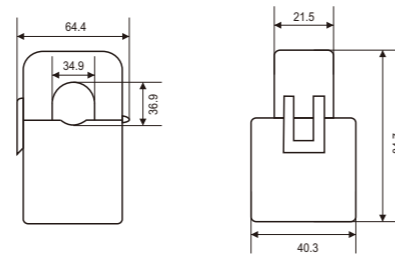
Model	Ratio (A)	Burden (VA)	
		Class:0.5	Class:1.0
ESCT-T24-1	100/1	-	1.5
ESCT-T24-1	150/1	-	1.5
ESCT-T24-1	200/1	1.5	2.5
ESCT-T24-1	250/1	1.5	3.75
ESCT-T24-1	300/1	2.5	5
ESCT-T24-1	400/1	3.75	6.25
ESCT-T36-1	100/1	-	1
ESCT-T36-1	150/1	1.5	3.75
ESCT-T36-1	200/1	2.5	5
ESCT-T36-1	300/1	5	7.5
ESCT-T36-1	400/1	5	10
ESCT-T36-1	500/1	7.5	10
ESCT-T36-1	600/1	10	15
ESCT-T24-5	100/5	-	-
ESCT-T24-5	150/5	-	-
ESCT-T24-5	200/5	1	1.5
ESCT-T24-5	250/5	1.5	2.5
ESCT-T24-5	300/5	2.5	3.75
ESCT-T24-5	400/5	2.5	5
ESCT-T36-5	100/5	-	-
ESCT-T36-5	150/5	-	1
ESCT-T36-5	200/5	1	2.5
ESCT-T36-5	300/5	2.5	5
ESCT-T36-5	400/5	5	6.25
ESCT-T36-5	500/5	5	6.25
ESCT-T36-5	600/5	5	6.25

► **Dimensions**

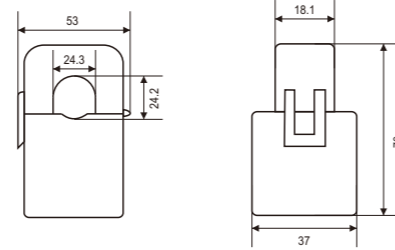
ESCT-T24-1



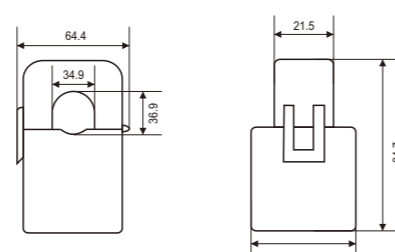
ESCT-T36-1



ESCT-T24-5



ESCT-T36-5



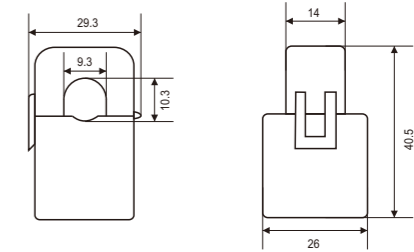
Specification

Frequency	50-60Hz
Rated current	5A to 600A loads
Rated output	100mA/333mV/100mV (AC)
Accuracy	Class 0.5 or 1 from 20% to 120% of rated current
Phase angle	less than 2 degrees at 50% of rated current
Insulation voltage	600Vac
Maximum primary voltage	5000Vac (Insulated Conductor)
Dielectric strength	2.5KV/1mA/1min
Operating temperature	-12°C to +75°C.
Operating humidity	<85%
Case material	PC / UL94-V0
Bobbin	PBT
Core	Permalloy
Internal structure	Epoxy
Leads	UL 1015, Twisted Pair, 22AWG

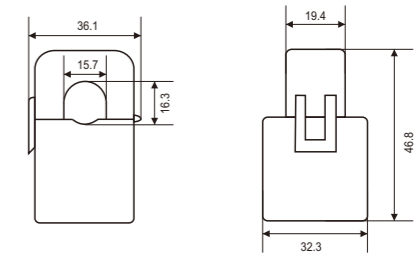
Model	Rated Amps	Output	Accuracy
ESCT-TU10	5	100mA/333mV/100mV	0.5/1/3
ESCT-TU10	10	100mA/333mV/100mV	0.5/1/3
ESCT-TU10	20	100mA/333mV/100mV	0.5/1/3
ESCT-TU10	50	100mA/333mV/100mV	0.5/1/3
ESCT-TU10	80	100mA/333mV/100mV	0.5/1/3
ESCT-TU16	10	100mA/333mV/100mV	0.5/1/3
ESCT-TU16	50	100mA/333mV/100mV	0.5/1/3
ESCT-TU16	100	100mA/333mV/100mV	0.5/1/3
ESCT-TU16	120	100mA/333mV/100mV	0.5/1/3
ESCT-TU24	10	100mA/333mV/100mV	0.5/1/3
ESCT-TU24	50	100mA/333mV/100mV	0.5/1/3
ESCT-TU24	100	100mA/333mV/100mV	0.5/1/3
ESCT-TU24	250	100mA/333mV/100mV	0.5/1/3
ESCT-TU24	400	100mA/333mV/100mV	0.5/1/3
ESCT-TU36	20	100mA/333mV/100mV	0.5/1/3
ESCT-TU36	100	310mA/333mV/100mV	0.5/1/3
ESCT-TU36	250	100mA/333mV/100mV	0.5/1/3
ESCT-TU36	400	100mA/333mV/100mV	0.5/1/3
ESCT-TU36	600	100mA/333mV/100mV	0.5/1/3

► **Dimensions**

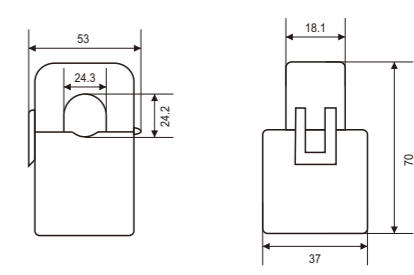
ESCT-TU10



ESCT-TU16



ESCT-TU24



ESCT-TU36

